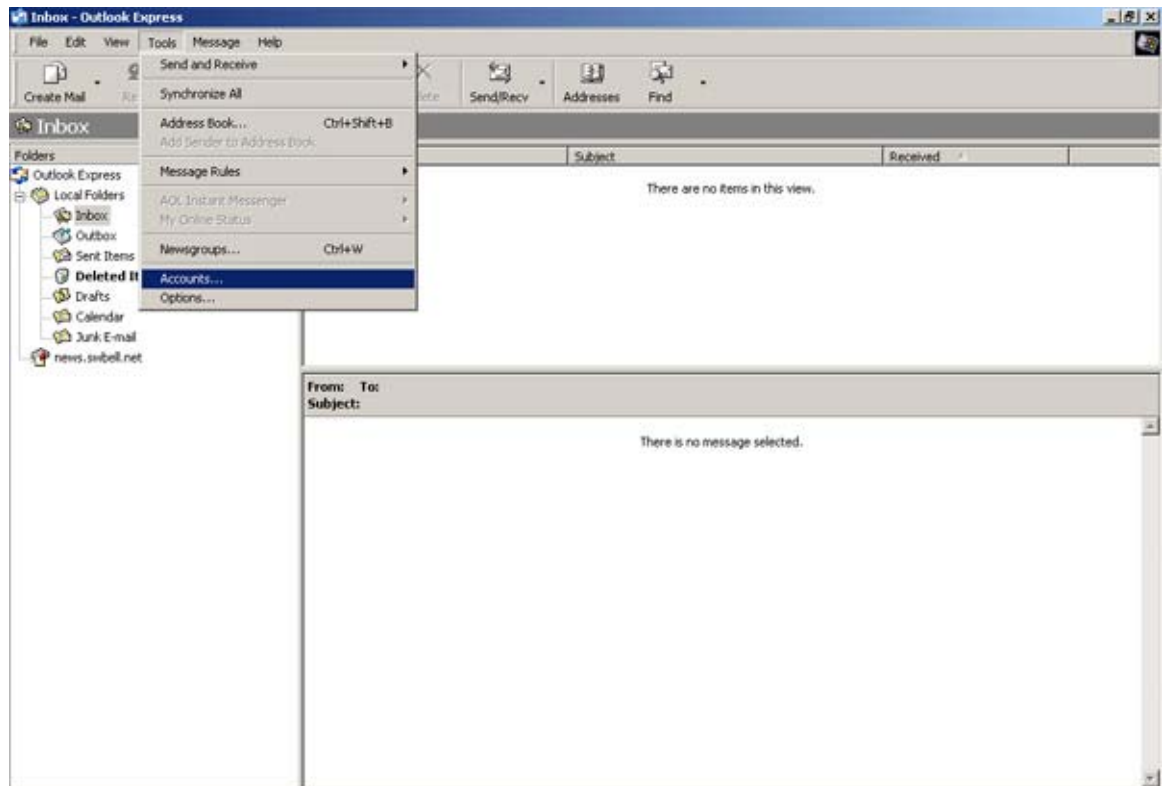
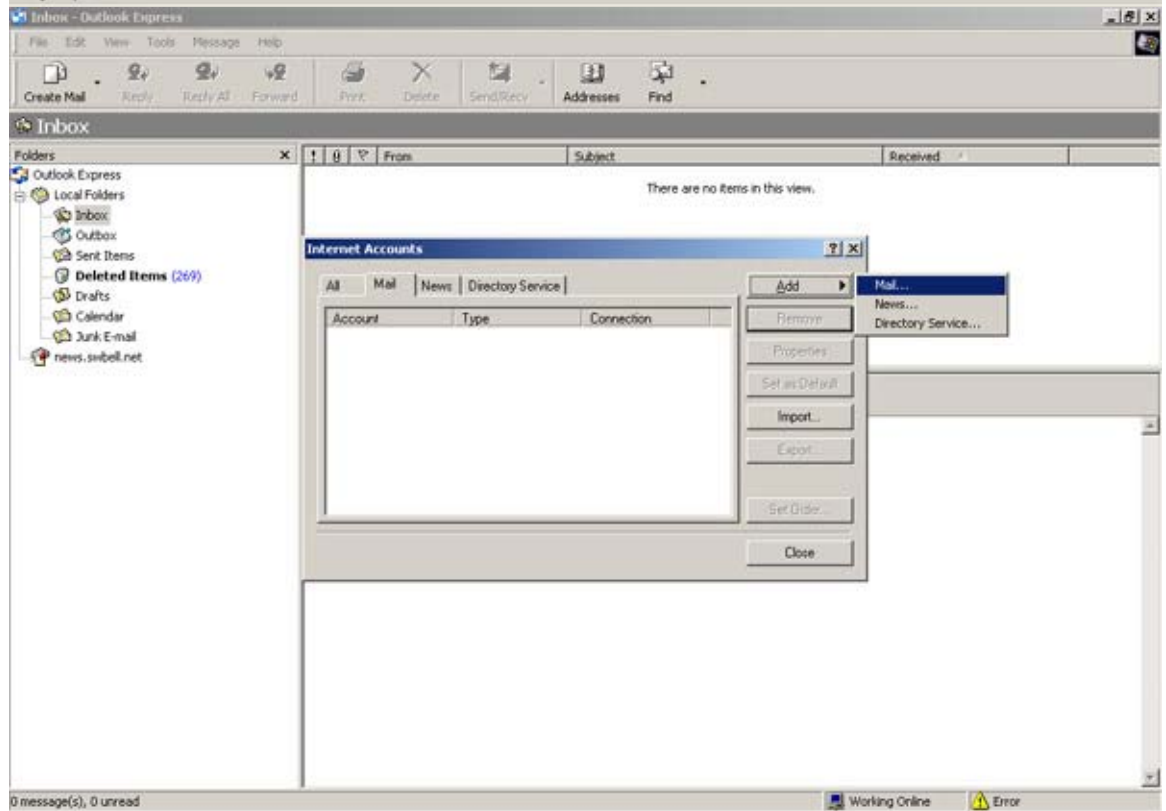


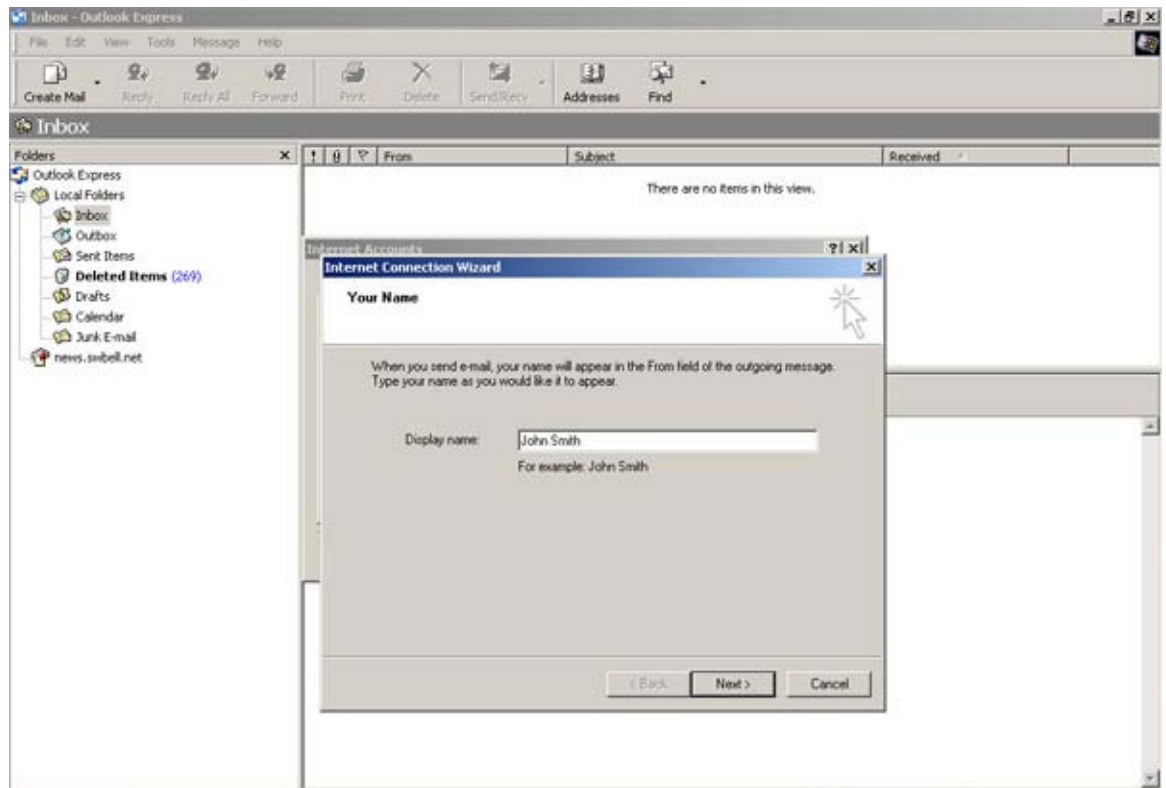
1. Click **Tools** and then **Accounts**.



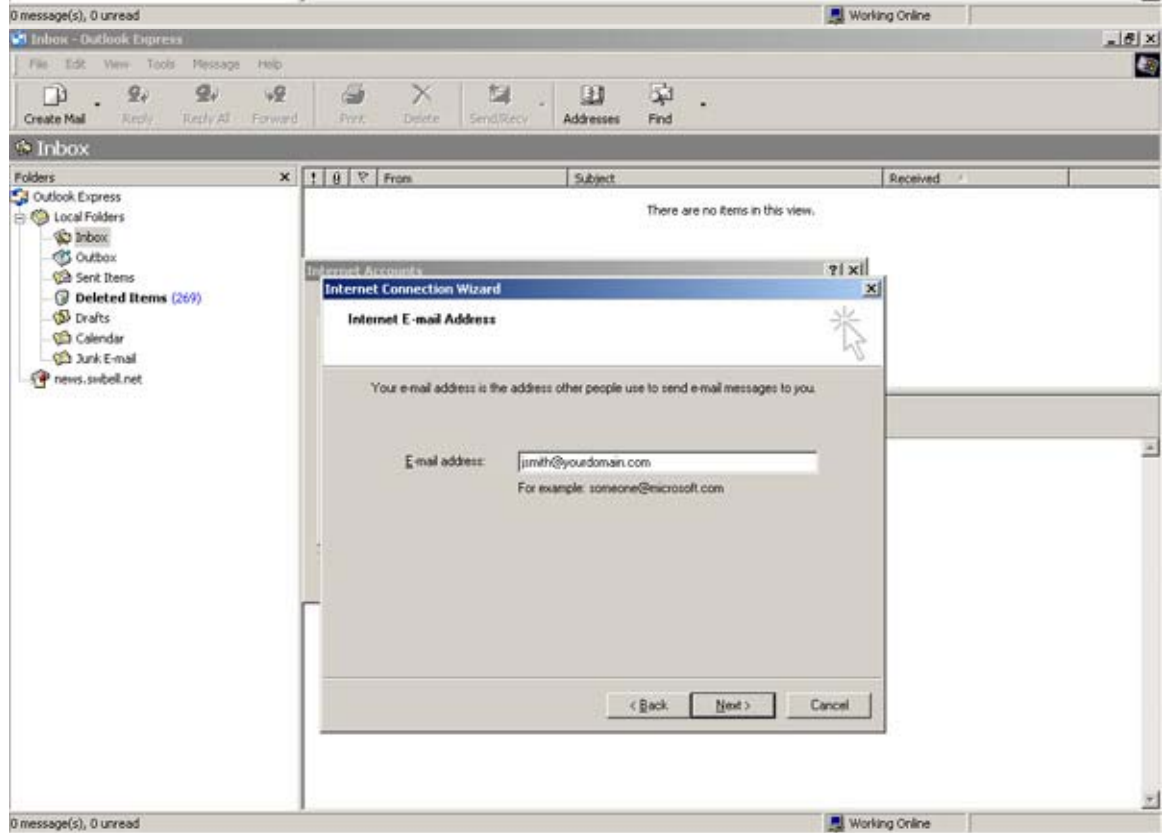
2. Click **Add** then **Mail**.



3. Enter your first and last name. Click **Next**.

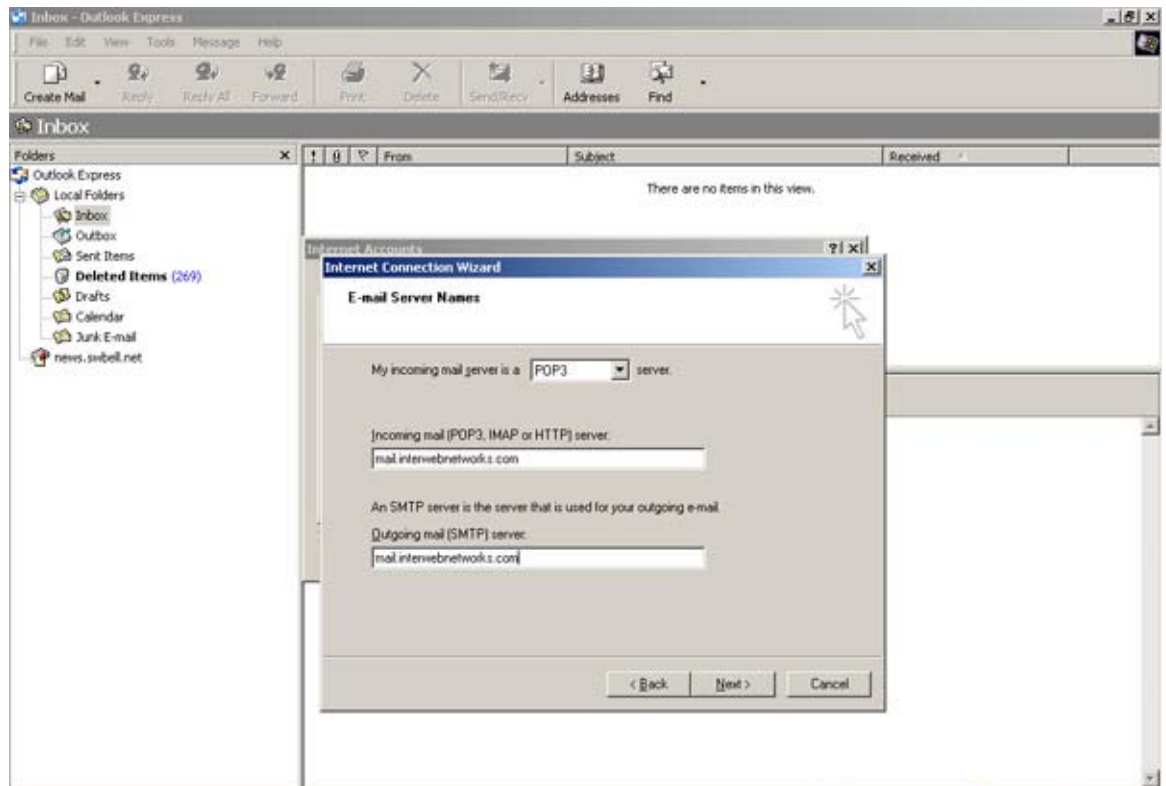


4. Enter your full email address. Click **Next**.

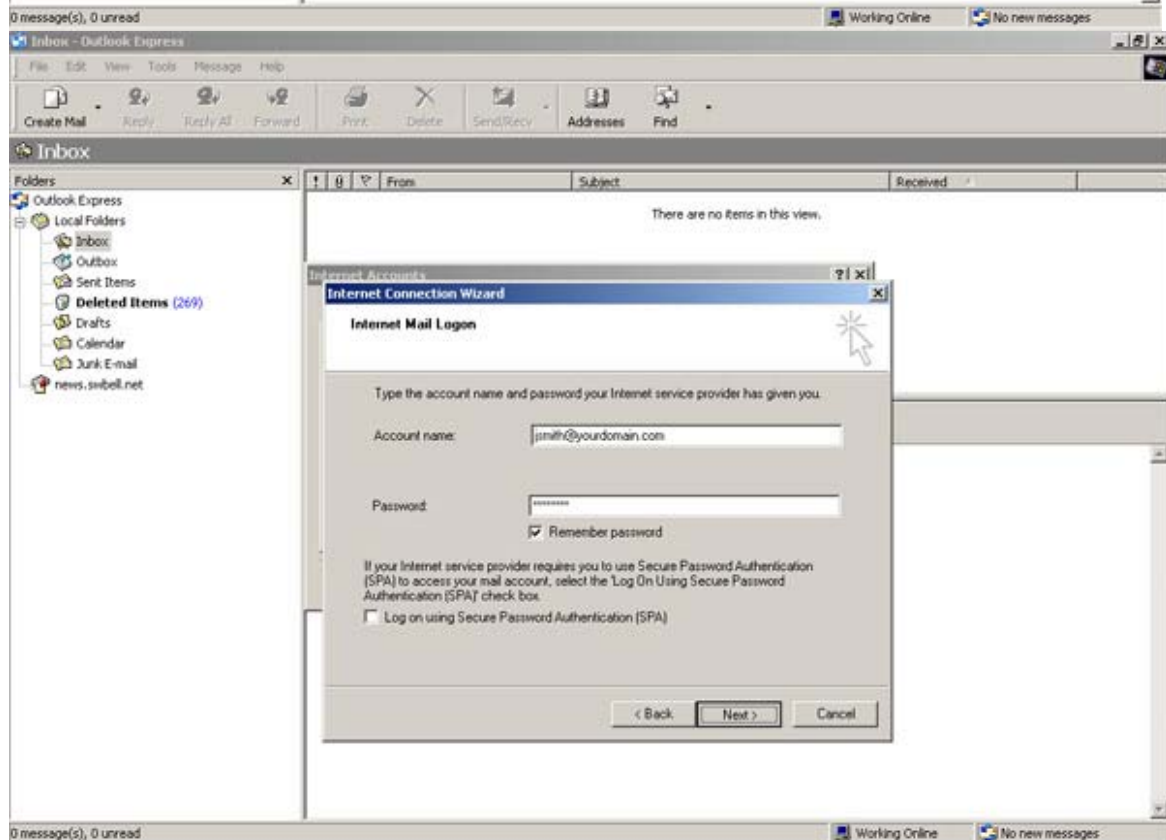


5. Leave mail server as **POP3**.

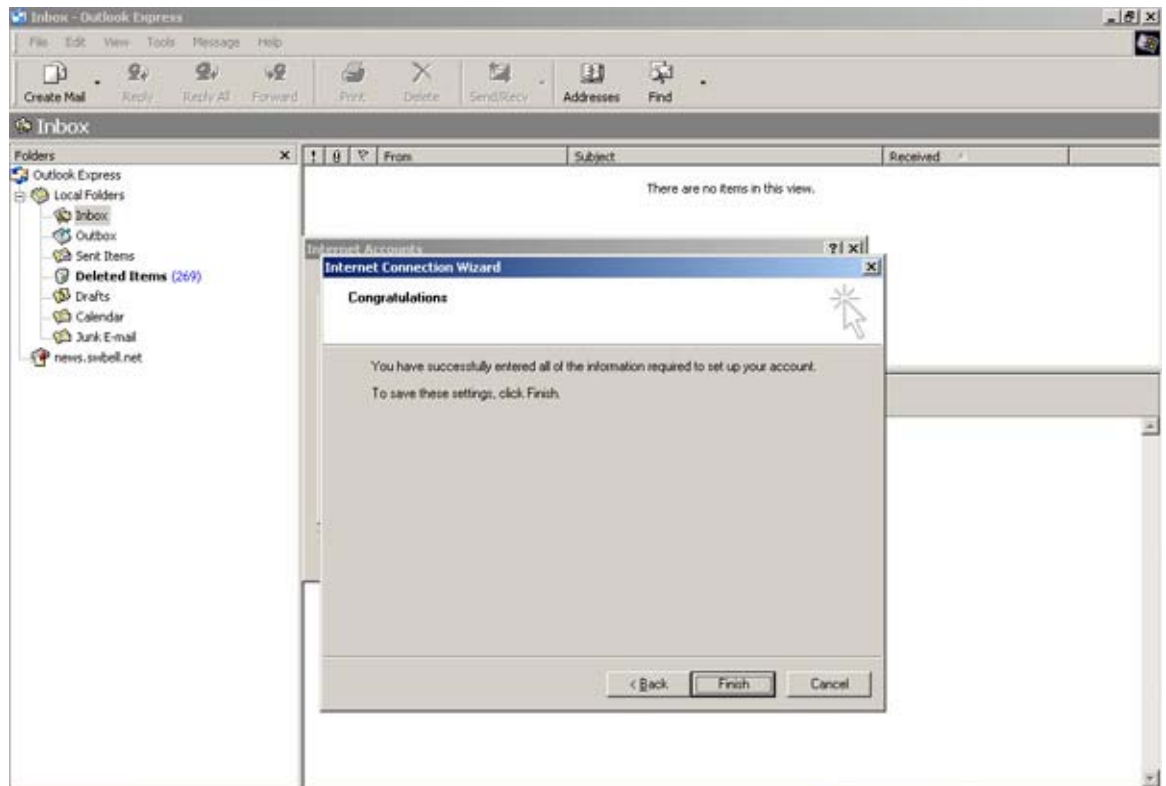
For incoming and outgoing mail servers, enter either mail.yourdomain.xxx (replace yourdomain.xxx with the domain name being hosted) or mail.interwebnetworks.com. Click **Next**.



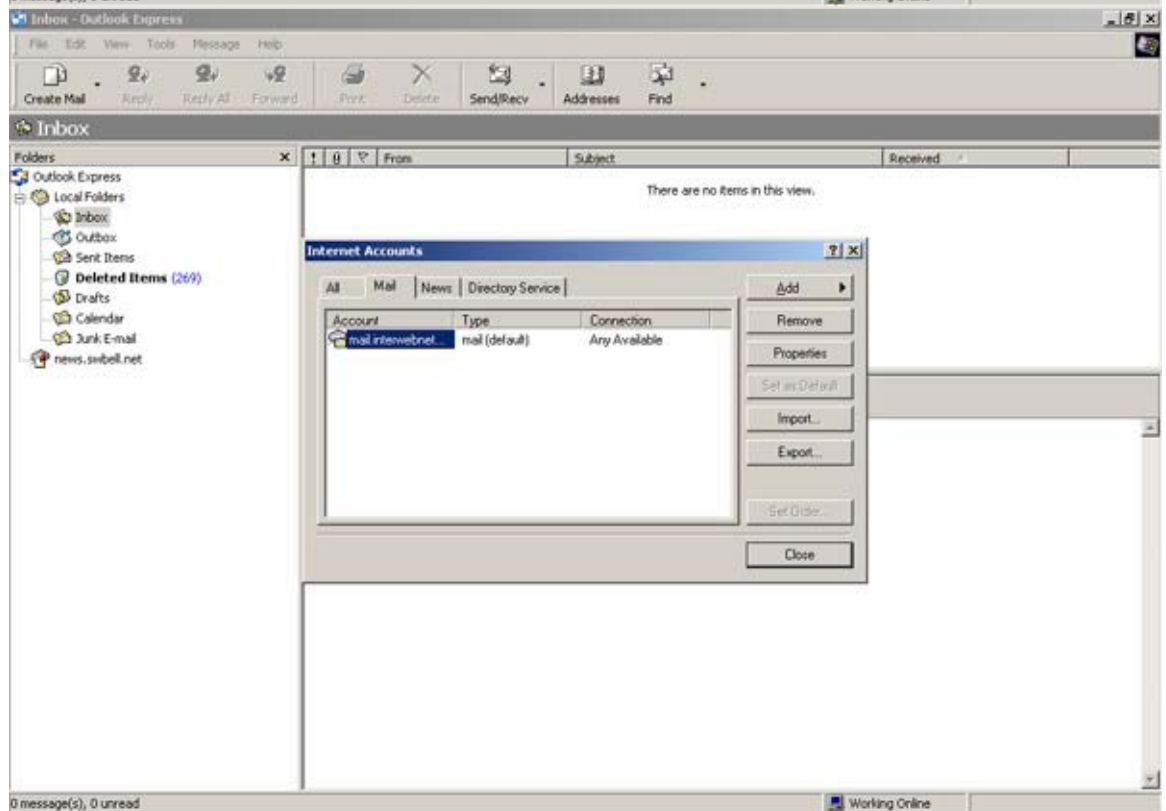
6. Enter your full email address under **Account name** and then your password. Clicking **Remember password** is optional. Make sure **Log on using Secure Password Authentication** is NOT checked. Click **Next**.



7. Click **Finish**.



8. Highlight the account you just created by clicking on it once. Click **Properties**.



9. When the properties page appears, click the **Servers** tab. Make sure that **My server requires authentication** is checked. Click **OK** then click close.

You are now ready to begin sending and receiving email!

If you still require assistance, please call Interweb New Media's support at 214-503-7447 or refer to our web site at www.interwebnewmedia.com.

